



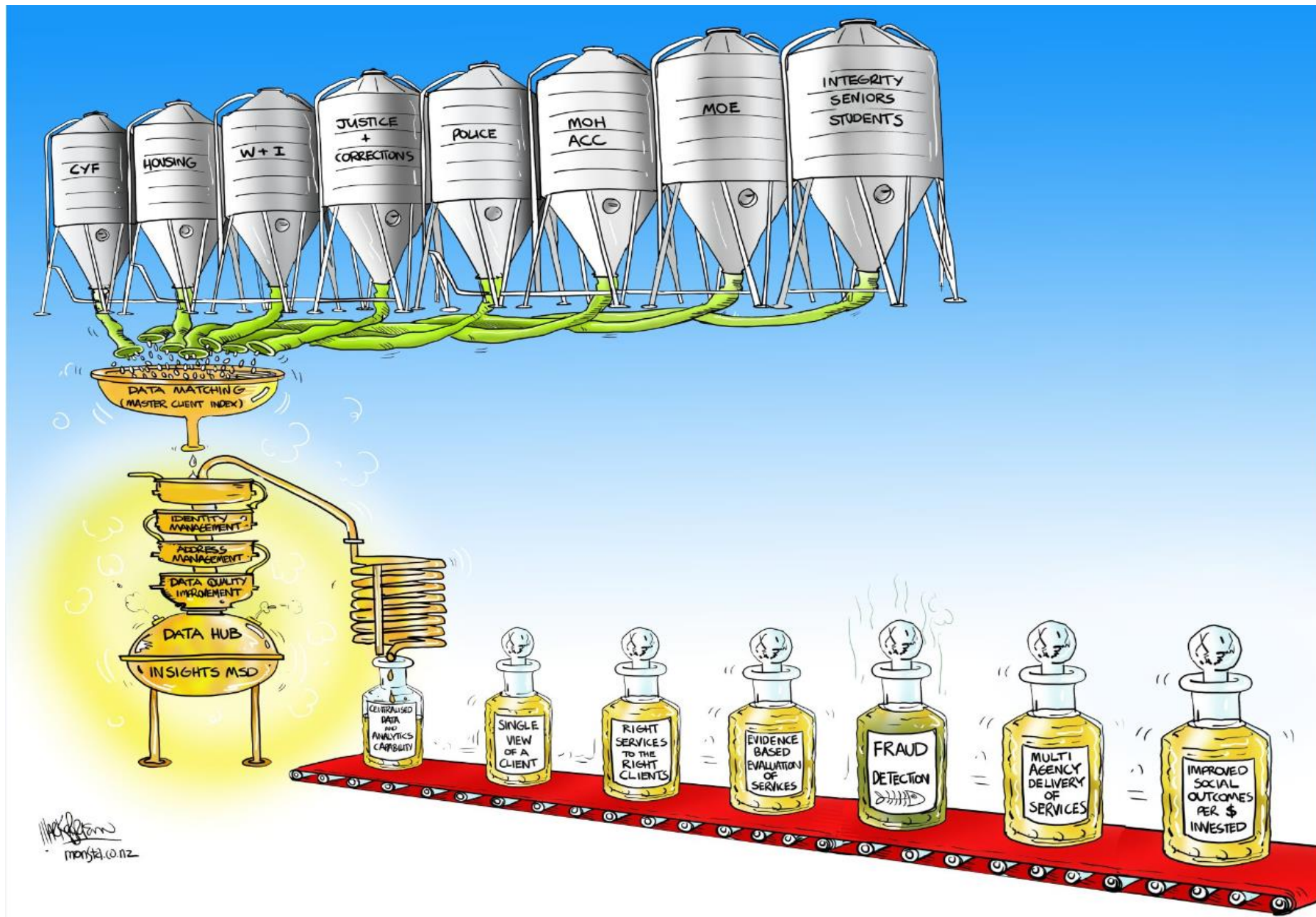
SAS Visual Analytics

Implications and Opportunities for Child Youth and Family Operational Reporting

Political Context

Hon BILL ENGLISH : Well, there is an interesting issue around data, and that is that most of the data held by the Government is organised around Government departments, not around families and communities.

One of the challenges for the Public Service is to reorganise the millions and millions of dollars' worth of data that it has in a way that is much more relevant to decisions about families and communities, not about Government departments.



Rebuild the Traffic Light Report using

Add a workforce page with staff numbers, caseloads, levels of experience

SAS VA

Information Management THE TRAFFIC LIGHT

For period 1 Jul 2014 to 31 Oct 2014

Report 005 created on 5 Nov 2014 using data extracted from the IAP CYRAS SAS REPLICA on 4 Nov 2014

Report owner is: CYF IT Directorate

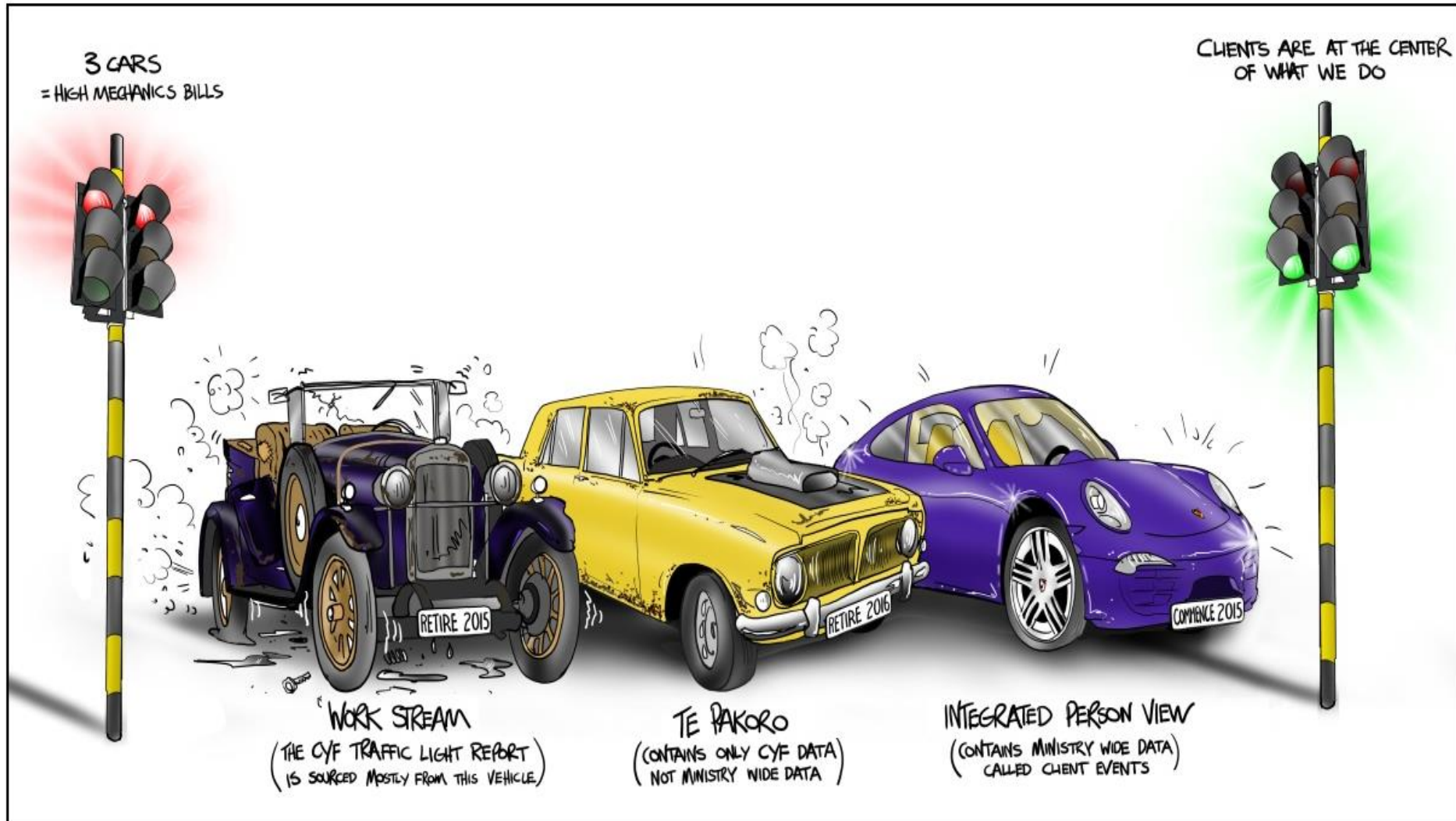
Add information about children in care

[Go to The Cyras Handbook.](#)

[User Guide](#) [Analyse](#) [Top](#) [Bottom](#) [Back](#) [Fwd](#) [Print](#) [Close](#)

Site	Critical Notification Exceptions	Very Urgent Notification Exceptions	Urgent Notification Exceptions	Urgent Wks Notification Exceptions	Low Urgent Notification Exceptions	Low Urgent Wks Notification Exceptions	Family Whanau Agreements	Family Court Plan Reviews	Youth Court Reviews	C&P FGC Reviews	Y'th Just FGC Reviews	Total KPIs
Orewa	100.0%	100.0%	76.0%	96.9%	100.0%	90.6%	100.0%	95.5%	N/A	100.0%	N/A	95.3%
Waitakere	96.8%	100.0%	100.0%	100.0%	100.0%	84.9%	100.0%	100.0%	N/A	100.0%	N/A	95.9%
Westgate	100.0%	100.0%	100.0%	98.7%	100.0%	94.6%	100.0%	100.0%	100.0%	100.0%	100.0%	97.8%
Takapuna	100.0%	100.0%	100.0%	100.0%	100.0%	100.0%	100.0%	100.0%	100.0%	100.0%	100.0%	100.0%
Grey Lynn	100.0%	100.0%	100.0%	100.0%	100.0%	96.1%	100.0%	100.0%	100.0%	100.0%	100.0%	99.2%
Penmure	100.0%	100.0%	100.0%	97.4%	100.0%	98.8%	100.0%	100.0%	N/A	100.0%	N/A	98.7%
Onehunga	100.0%	100.0%	100.0%	100.0%	100.0%	100.0%	100.0%	88.2%	N/A	100.0%	N/A	98.8%
Otahuhu	100.0%	100.0%	100.0%	99.3%	100.0%	100.0%	100.0%	100.0%	N/A	100.0%	N/A	99.7%
Otara	98.7%	94.7%	100.0%	100.0%	100.0%	100.0%	100.0%	100.0%	100.0%	100.0%	100.0%	99.7%
Mangere	98.8%	100.0%	100.0%	97.3%	100.0%	100.0%	100.0%	97.9%	94.1%	100.0%	100.0%	98.3%
Papakura	100.0%	100.0%	76.2%	98.7%	100.0%	98.6%	100.0%	100.0%	N/A	100.0%	100.0%	98.4%
Clendon	100.0%	97.0%	100.0%	100.0%	100.0%	88.5%	100.0%	100.0%	N/A	100.0%	N/A	97.3%
Manurewa	100.0%	100.0%	100.0%	100.0%	100.0%	100.0%	100.0%	96.2%	100.0%	100.0%	97.8%	99.4%
Pukekohe	100.0%	93.8%	100.0%	97.2%	100.0%	100.0%	100.0%	97.0%	N/A	100.0%	100.0%	97.9%
Waikato East	100.0%	97.9%	100.0%	72.4%	92.6%	76.3%	100.0%	98.1%	100.0%	100.0%	100.0%	84.4%
Waikato West	97.9%	100.0%	100.0%	98.2%	95.0%	95.5%	100.0%	100.0%	100.0%	100.0%	100.0%	97.9%
Hauraki	100.0%	100.0%	78.6%	97.6%	100.0%	97.2%	100.0%	100.0%	N/A	100.0%	N/A	97.7%
Tauranga	94.6%	82.6%	100.0%	97.6%	87.4%	96.3%	93.3%	98.2%	100.0%	96.6%	100.0%	94.9%
Whakatane	100.0%	100.0%	54.6%	67.0%	100.0%	66.0%	100.0%	100.0%	N/A	100.0%	N/A	74.0%
Rotorua	100.0%	100.0%	100.0%	91.1%	91.7%	89.9%	100.0%	88.6%	100.0%	97.6%	100.0%	94.8%
Taupo	100.0%	100.0%	100.0%	99.2%	100.0%	98.5%	100.0%	100.0%	N/A	100.0%	100.0%	99.3%
Whanganui	100.0%	100.0%	100.0%	100.0%	100.0%	100.0%	100.0%	95.3%	100.0%	100.0%	100.0%	98.6%
Taumarunui	95.0%	N/A	N/A	98.8%	100.0%	91.6%	100.0%	66.7%	N/A	100.0%	100.0%	95.6%
Taranaki	100.0%	100.0%	100.0%	100.0%	100.0%	97.6%	100.0%	100.0%	100.0%	100.0%	100.0%	99.4%
Gisborne	100.0%	100.0%	100.0%	100.0%	100.0%	100.0%	100.0%	81.8%	100.0%	78.1%	100.0%	97.3%
Nanier	93.8%	100.0%	100.0%	97.8%	100.0%	96.8%	100.0%	100.0%	100.0%	100.0%	100.0%	98.3%

Where we are now



Traffic Light using VA

Traffic Light Summary		Notification Exceptions		Family Whanau Exceptions	Family Court Plans Reviews	Youth Court Reviews	C&P FGC Reviews	YJU FGC Reviews	Placements In Force					
Region	servicecentre	Site	Sub-Site	Critical Notification Exceptions	Very Urgent Notification Exceptions	Urgent Notification Exceptions	Low Urgent Notification Exceptions	% Family Whanau Ontime	% Family Court Plan Reviews	% Youth Court Reviews Ontime	% C&P FGC Reviews Ontime	% YJU FGC Reviews Ontime	% Total KPIs Ontime	
Auckland Region	Counties Manukau Operations	Clendon	Clendon	100.0%		100.0%	100.0%		100.0%		100.0%		100.0%	
		Mangere	Mangere	91.7%		100.0%	100.0%	100.0%	100.0%		100.0%		99.0%	
			Otahuhu YJ							100.0%		100.0%	100.0%	
		Manurewa		100.0%	100.0%	100.0%	100.0%	100.0%	100.0%	100.0%	100.0%	100.0%	100.0%	
		Otahuhu		100.0%	100.0%	100.0%	100.0%	100.0%	100.0%		100.0%		100.0%	
		Otara		100.0%	100.0%	100.0%	100.0%	100.0%	100.0%	100.0%	100.0%	100.0%	100.0%	
		Papakura		100.0%	100.0%	96.9%	100.0%	100.0%	100.0%		100.0%	100.0%	98.8%	
		Pukekohe		100.0%	100.0%	100.0%	100.0%	100.0%	100.0%		100.0%		100.0%	
	Waitemata Operations		100.0%	100.0%	96.2%	98.5%	100.0%	100.0%	100.0%	100.0%	100.0%	100.0%	98.1%	
Central Region				100.0%	100.0%	99.2%	97.0%	100.0%	100.0%	100.0%	100.0%	100.0%	98.9%	
Midlands Region	Bay of Plenty Operations	Rotorua		59.1%		79.3%	83.3%	0.0%	100.0%	50.0%	100.0%	100.0%	83.9%	
		Taupo		100.0%	100.0%	100.0%	100.0%	100.0%	100.0%		100.0%		100.0%	
		Tauranga		100.0%		89.1%	93.9%	100.0%	96.9%	100.0%	100.0%	100.0%	94.6%	
		Whakatane		100.0%	100.0%	81.7%	100.0%		100.0%		100.0%		88.8%	
	Waikato Operations		98.4%	100.0%	96.1%	93.4%	100.0%	98.3%	100.0%	100.0%	100.0%	100.0%	96.4%	
Southern Region				100.0%	100.0%	94.2%	96.2%	100.0%	94.2%	100.0%	100.0%	100.0%	96.4%	
Te Tai Tokerau				100.0%	90.0%	65.0%	91.1%	75.0%	66.7%		100.0%	100.0%	86.8%	
Total				97.4%	99.2%	95.1%	96.0%	98.8%	97.1%	96.6%	100.0%	100.0%	96.7%	

Phase 1

Use SAS VA to display the Traffic Light Report.

Add some information about Care

Demonstrate VA over CYF data

Phase 2

Develop Training Materials

Training for Site Managers/Expert Users on VA over Traffic Light

Site experts train local staff

Gradually move other Te Pakoro reports over to SAS VA

Phase 3

Introduce SAS VA over the new Integrated Person View.

This is the Ministry wide data set that includes Client event data from CYF, W&I and Corrections.

2016 Development of outcome focussed reports using multi agency data.



1/6/2015

1/7/2015

1/8/2015

1/9/2015

1/10/2015

1/11/2015

1/12/2015

1/1/2016

1/2/2016

1/3/2016

1/5/2015

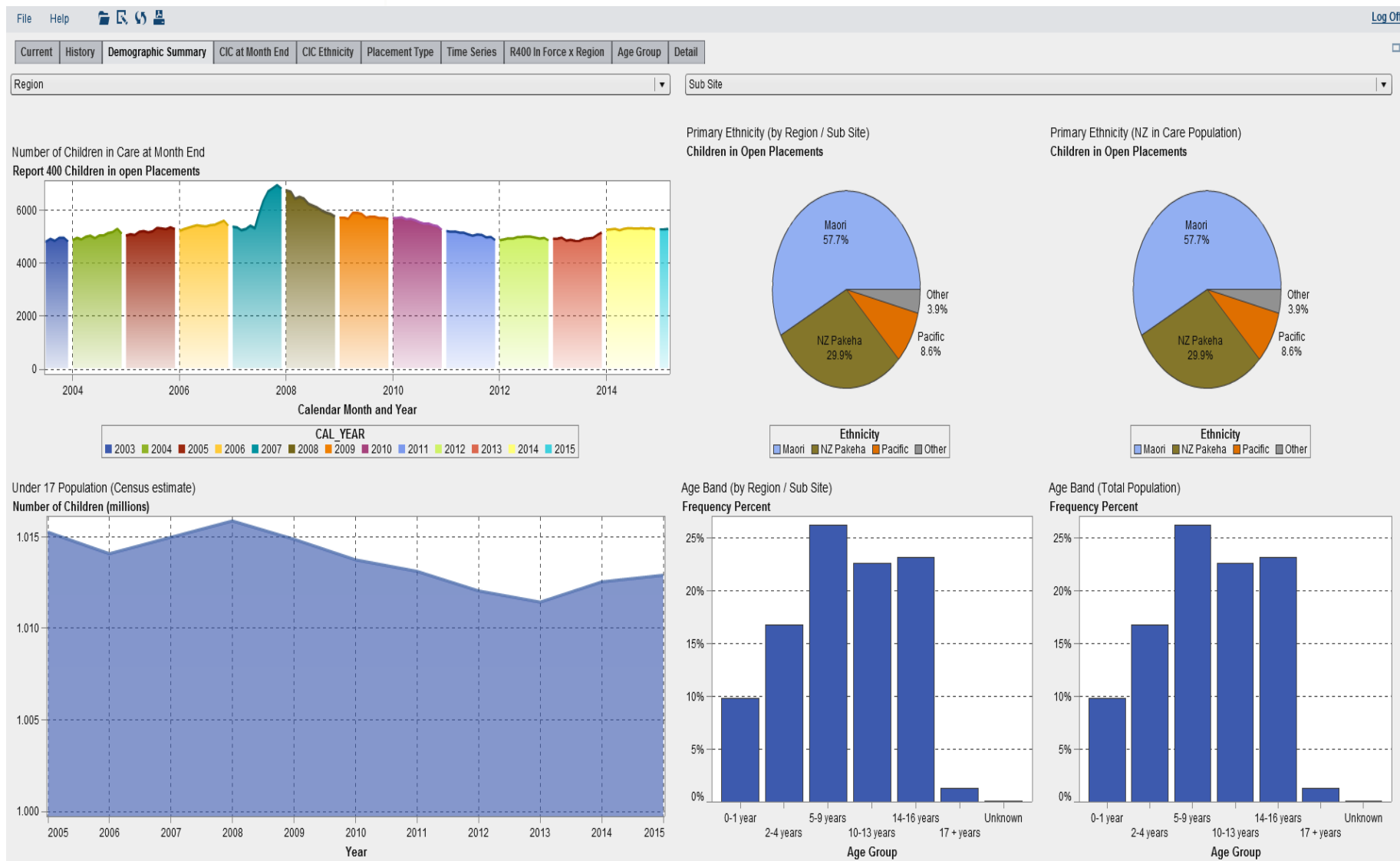
31/3/2016

1. Most staff will be report "consumers". They can not change the report content but can change views of the data to suite their circumstances E.G. Site Views and client exception lists.
2. Analysts will be able to develop reports and put them into a personal folder to share locally E.G. Regional Analysts.
3. Software Developers at National Office will prepare the Traffic Light and other reports using central change control process.

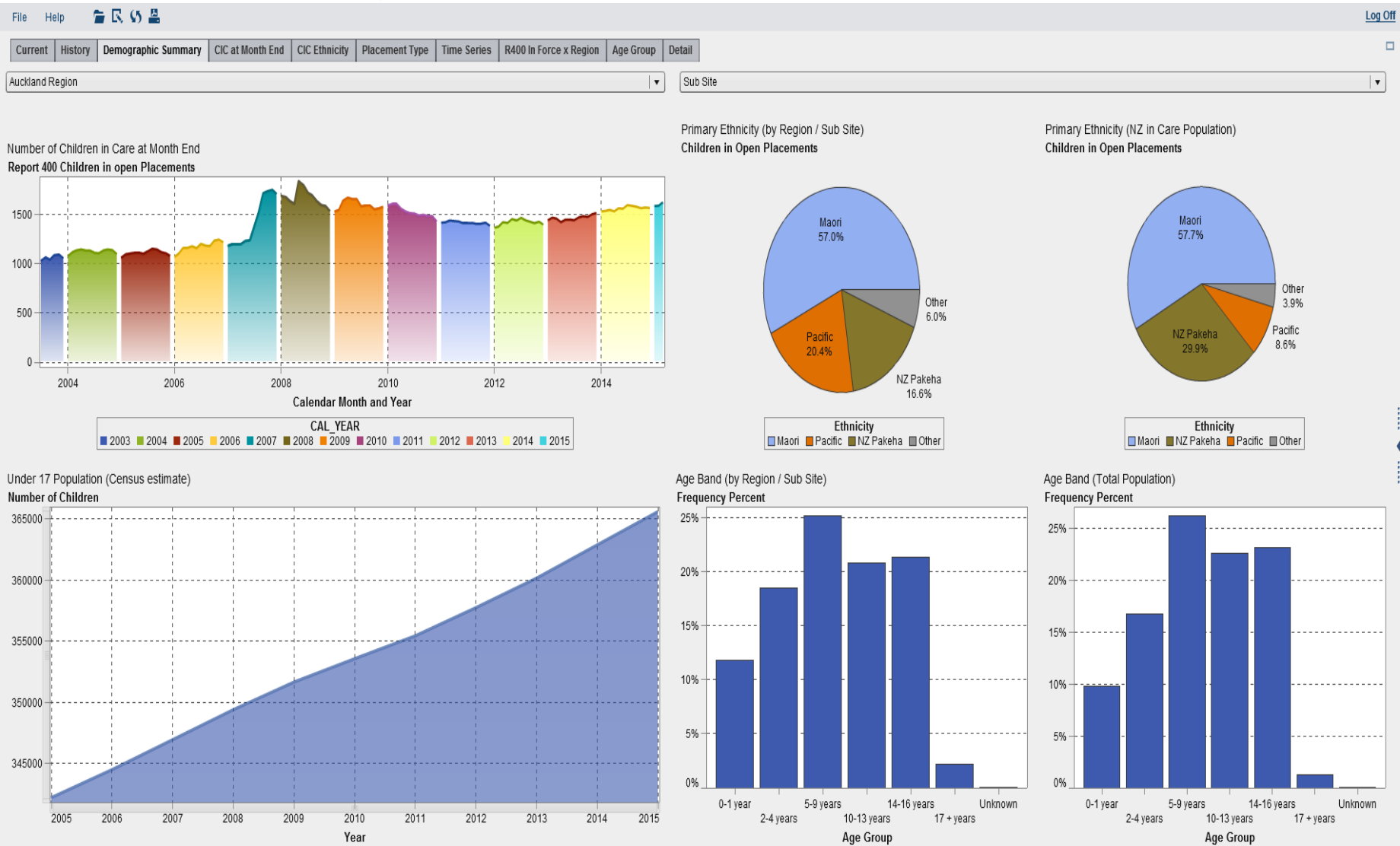
CARE IS A MAJOR COST & RESOURCE DRIVER FOR CYF. WHAT CAN WE LEARN ABOUT CHILDREN IN CYF CARE?

R400 Placements *					File Help		
Current History CIC at Month End CIC Ethnicity Placement Type					Current History CIC at Month End CIC Ethnicity Plac		
CIC by Region					CAL_PERIOD ▲ R400 In Force CNP_OUT_OF_HOME		
CAL_PERIOD ▲	2015-02	2015-03			2013-02	4912	3805
Region ▲	Children in Open Placements	Children in Open Placements			2013-03	4942	3836
⊕ ⊕ Auckland Region	1,588	1,623			2013-04	4832	3814
⊕ ⊕ Central Region	1,207	1,204			2013-05	4864	3827
⊕ ⊕ Midlands Region	1,110	1,101			2013-06	4823	3844
⊕ ⊕ Southern Region	1,046	1,042			2013-07	4824	3856
⊕ ⊕ Te Tai Tokerau Region	308	311			2013-08	4896	3923
Total	5,259	5,281			2013-09	4921	3906
					2013-10	4933	3943
					2013-11	5050	3983
					2013-12	5140	3949
					2014-01	5236	3964
					2014-02	5256	3998
					2014-03	5277	4043
					2014-04	5220	4020
					2014-05	5281	4073
					2014-06	5306	4129
					2014-07	5296	4121
					2014-08	5283	4124
					2014-09	5306	4135
					2014-10	5288	4159
					2014-11	5301	4141
					2014-12	5259	4103
					2015-01	5257	4090
					2015-02	5259	4102
					2015-03	5281	4119
					2015-04	5252	4103

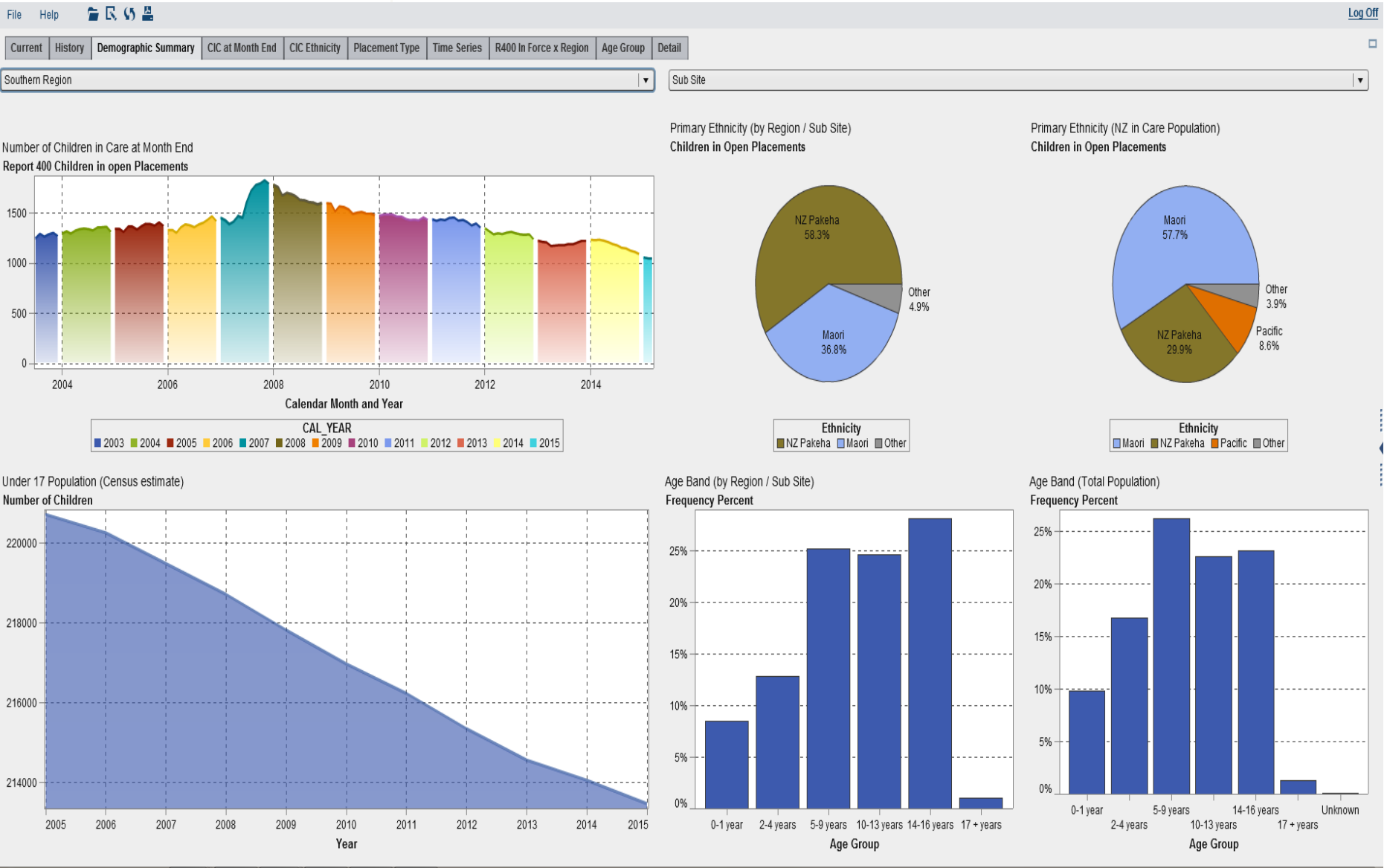
THE IN CARE POPULATION CAN BE VIEWED FOR ALL OF NZ, BY CYF REGION, OR SITE.



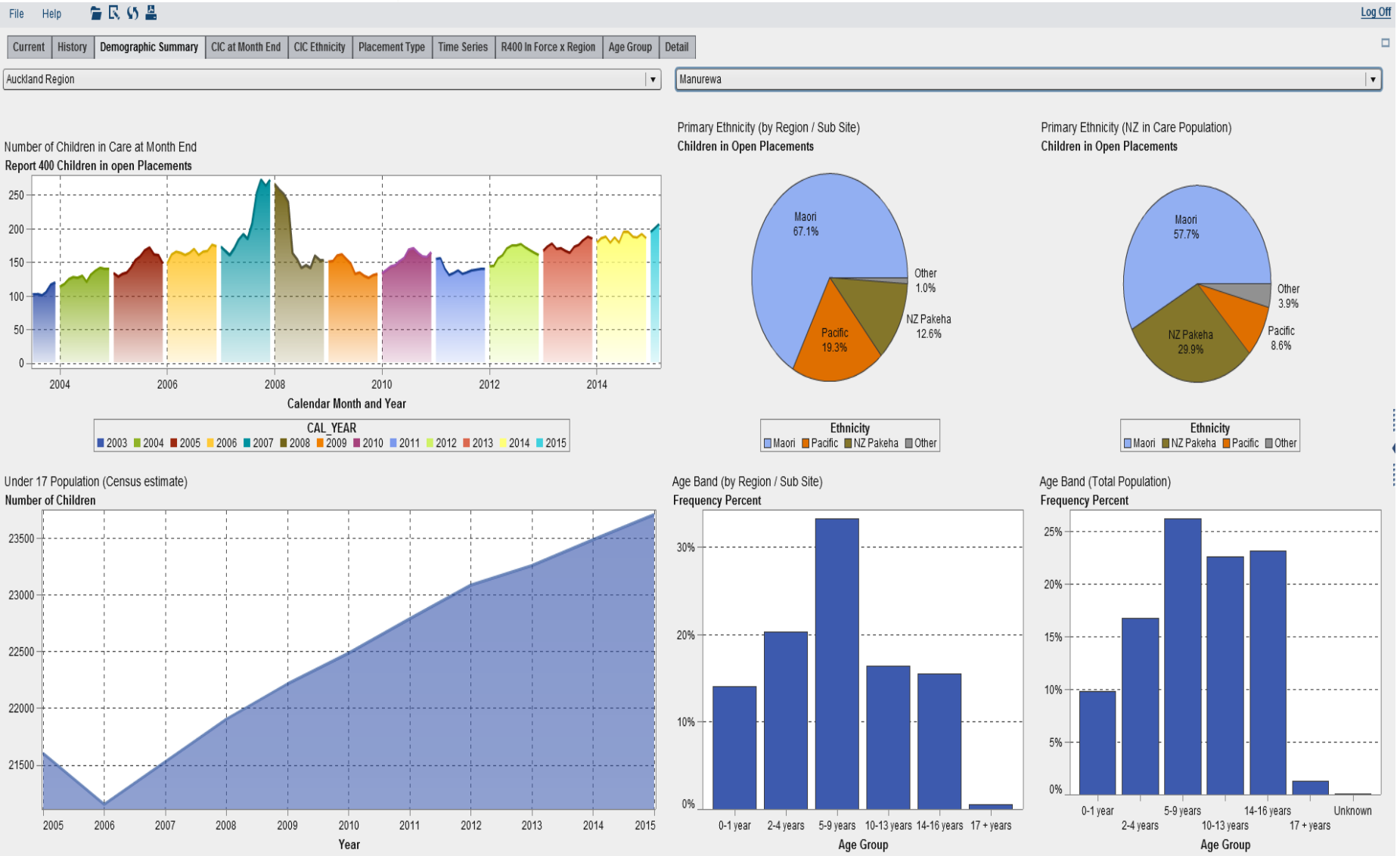
AUCKLAND REGION DEMOGRAPHICS INCLUDING CENSUS UNDER 17 POPULATION ESTIMATES



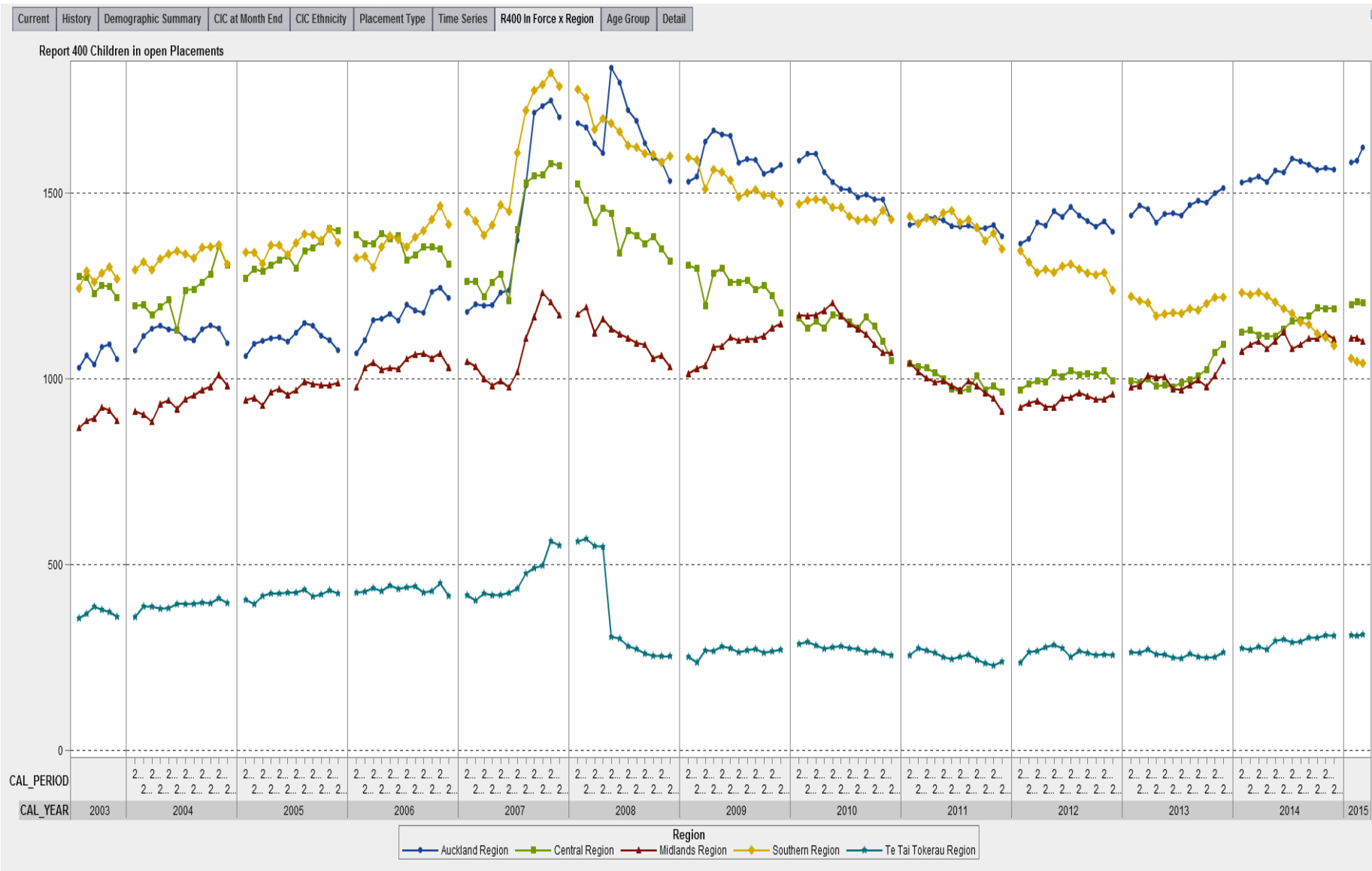
COMPARE TO SOUTHERN REGION CARE POPULATION



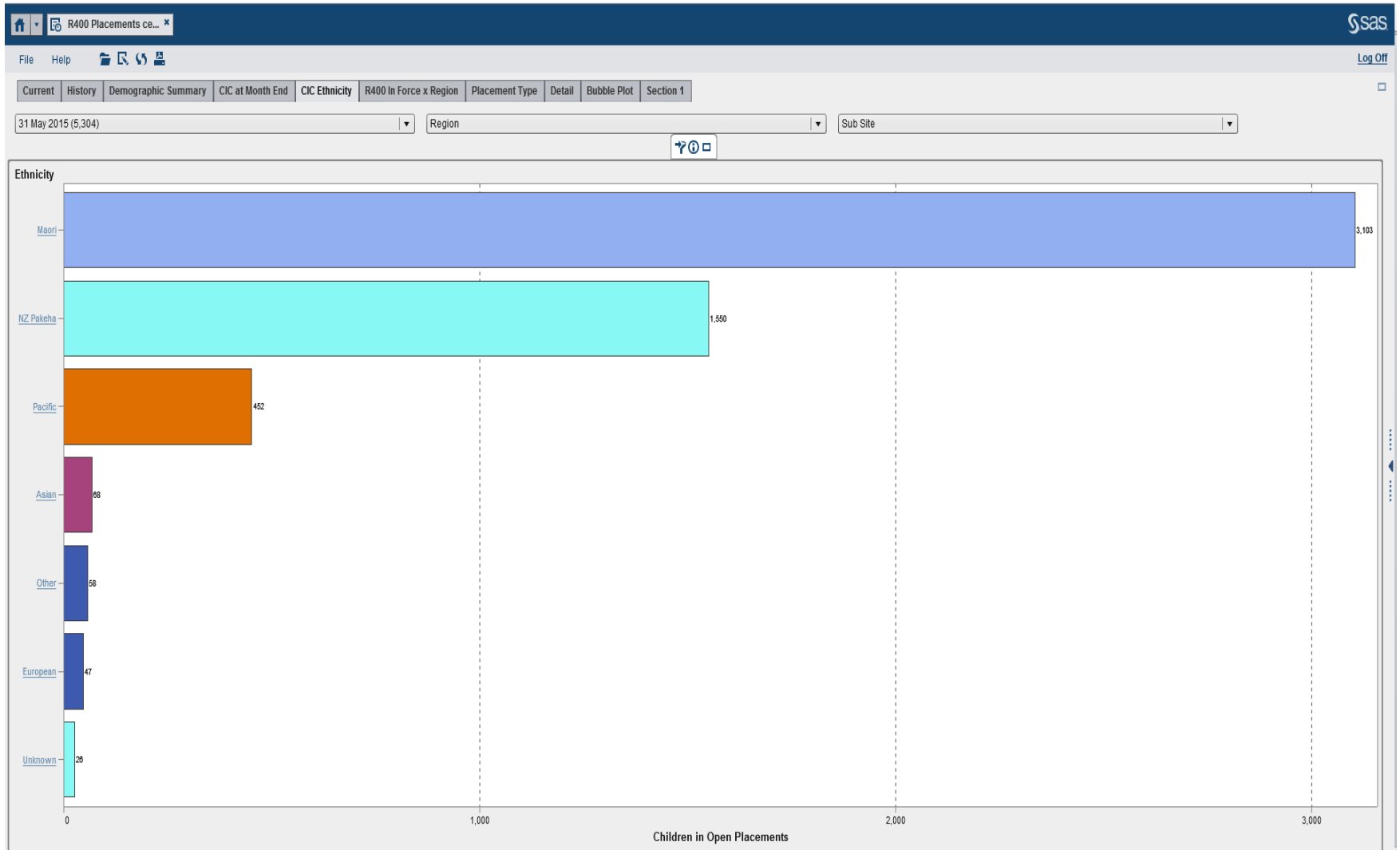
MANUREWA SITE PROFILE



REGIONAL CARE POPULATION THROUGH TIME



ETHNICITY OF CHILDREN IN CARE



THE INDIVIDUALS IN CARE

FileHelp

Current

History

Demographic Summary

CIC at Month End

CIC Ethnicity

R400 In Force x Region


Placement Type

Detail

Bubble Plot

Section 1


LINK SAS VA TO CLIENT RECORD IN THE SOURCE SYSTEM

Edit External Link 



Enter a URL and label. Or click the button to link to a stored process.


Label:

URL: *

 **Link to Stored Process**

Parameters

☒ Format value Source: *  Drill to Cyras ID | ▼ Target: 

 Add a new parameter

IWI AFFILIATION CAN BE ADDED WHERE KNOWN

File Edit Bookmarks Actions Window Help

Details Demographics Permanent Care Case History Relationships Past Involvement Legal Status Genograms Assessment Summary

Ethnicity

Primary	Ethnicity	Affiliation	Type	Comments
<input checked="" type="checkbox"/>	New Zealand Maori	Ngati Kahu	Paternal	

GP/Doctor Details Employment Details